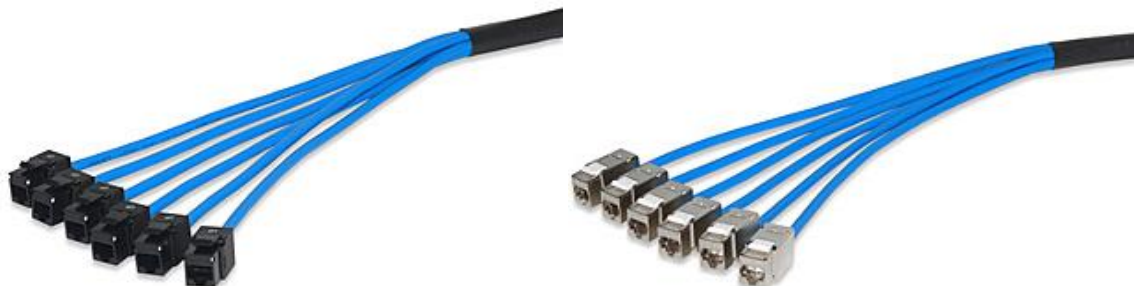


Cat6A Pre-Terminated Copper Trunk Cable, 23AWG, 1000Base-T

Cat6A Pre-terminated Trunk Assemblies help to reduce significantly both time and cost of a cabling installation. Terminated and tested in a controlled manufacturing environment, cut to the customer pre-ordered lengths, and ready to install in a patch panel, trunk assemblies exclude all these operations in the field making your job easy and efficient. Trunk cable assemblies can be provided in an unscreened (U/UTP) and screened (F/UTP) versions in either in a jack-to-jack, jack-to-plug, to support the widest range of applications. Cables can be used with any field-configurable patch panel (screened assemblies are not compatible with PEMP1S4S panels).



- Ready-to-use product-cable bundles are ready for installation and require no additional termination operations.
- Solid cable and keystone jacks used in the assembly meet category 6 specifications.
- Pre-tested at the factory per ANSI/TIA-568-C.1 requirements.
- All cable are labelled at both ends for easy identification in the field.
- Each cable bundle is enclosed in a CMP-rated mesh sleeve protects it during installation.
- Mesh sleeve is fixed by heat-shrink tubing that can be used when cable pulling is needed.

TRANSMISSION PERFORMANCE

ANSI/TIA-568-C.2: meets category 6A (1-500 MHz) permanent link specifications

TRANSMISSION MEDIA

Unscreened 100-Ohm twisted pair (U/UTP)

Screened 100-Ohm twisted pair (F/UTP)

JACK TYPE

CAT6A, 8-position, 8-contact "RJ45" style, keystone design

WIRING SCHEME

ANSI/TIA-568-C.2: T568B

WIRE GAUGE

23 AWG, solid copper

ELECTRICAL – JACK

Insulation resistance	min 500 MOhm@100Vdc
Dielectric withstanding voltage	1,000Vdc/ac peak contact-to-contact @60 Hz for 1 min
Spring wire contact resistance	max 20 mOhm
IDC contact resistance	max 2.5 mOhm

ELECTRICAL – CABLE

Spark test	2,000 ± 250 Vac
Dielectric strength	2,500 Vdc / 3 seconds

Insulation resistance
Conductor resistance
Resistance unbalance
Capacitance unbalance
Mutual capacitance

min 150 MOhm/km
max 9.38 Ohm / 100@ 20 °C
max 2 %
max 160 pF
max 5,600 pF

ELECTRICAL – PLUG

Insulation resistance
Dielectric withstanding voltage
Contact resistance

min 500 MOhm @ 100 Vdc
1,000 Vdc/ac peak contact-to-contact@60 Hz for 1 min
max 20 mOhm

CONSTRUCTION – JACK

Housing

Unscreened
Screened

high-impact thermoplastic, UL94V-0 fire-retardant
zinc-alloy fully shielded, grounding post for 2.5 x 0.5-mm
female disconnect

Jack spring wire

phosphor bronze alloy plated with 50 µin of gold over
70-100 µin of nickel

IDC

110 type, phosphor bronze alloy with 100-µin 100% tin
alloy

MOUNTING DIMENSIONS – JACK

Unscreened
Screened

D 30.00 mm H 19.30 mm W 16.90 mm
D 42.40 mm H 25.80 mm W 16.90 mm

CONSTRUCTION – CABLE

Cable Count
Category
Conductor Material
Conductor Size
Diameter for Unscreened
Diameter for Screened
Colour coding

6
CAT6A-U/UTP or F/UTP
bare copper
23 AWG
0.565 mm
0.570 mm
Blue/white-blue -Orange/white-orange-
Green/white-green- Brown/white-brown

Tensile
SHEATH Material
SHEATH Thickness
SHEATH Colour
Cable Diameter Unscreened
Cable Diameter Screened
Elongation
Tensile strength
SCREEN PET tape
SCREEN Aluminium/PET tape

strength min 1.682 kg/mm²
CMP-rated thermoplastic
0.55 ± 0.05 mm
Customized
7.5 mm
7.8 mm
min 100 %
min 1.407 kg/mm²
0.023 mm thickness
0.025 mm thickness

CONSTRUCTION – PLUG

Assembly
Housing
IDC blades

FCC Part 68 Subpart F
UL listed 94V-0 flame retardant polycarbonate
phosphor bronze, min 50 µin of gold plating over 100 µin
of nickel in contact area.

MECHANICAL – JACK

Total contact force
Retention force
Mating cycle life

min 800 g for 8 wire leads
50 N for 60 s
min 750 cycles

MECHANICAL – CABLE

Tensile strength	>400 N
Minimum bend radius	25 mm

MECHANICAL – PLUG

Retention	50N for 60s
Mating cycle life	min 750 cycles
Tensile strength	≥ 20 N per wire

ENVIRONMENTAL CONDITIONS

Storage	-40 °C – +70 °C
Operation	-10 °C – +60 °C
RH (operation)	max non-condensing 93 %

COMPLIANCE

ANSI/TIA-568-C.2, IEC 60603-7, IEC 61156-6, IEC 60332-1-2,
FCC Part 68 Subpart F, UL 94V-0, UL 444, UL 1666.

APPLICATIONS

Easy connection in switches and patch panels.
Rated for any 10GBase-T Ethernet.
Used for copper backbone and cross-connect cabling.

Ordering Information

PN	Description
T6AUJJXX	CAT6A Trunk Cable, Jack-to-Jack, Unscreened (U/UTP) Cable 03-90Mt
T6AUJPXX	CAT6A Trunk Cable, Jack-to-Plug, Unscreened (U/UTP) Cable 03-90Mt
T6AFJJXX	CAT6A Trunk Cable, Jack-to-Jack, Screened (F/UTP) Cable 03-90Mt
T6AFJPXX	CAT6A Trunk Cable, Jack-to-Plug, Screened (F/UTP) Cable 03-90Mt

For length substitute XX for length in Meter. Minimum length is 3 Mt. Maximum length is 90 Mt.
Unscreened cable colour is blue. Screened cable is grey. Other colours are available.